

Annual Conference Feedback

Fuels and Passenger Cars Working Groups

17th March 2005

Greg Archer

Director Low Carbon Vehicle Partnership

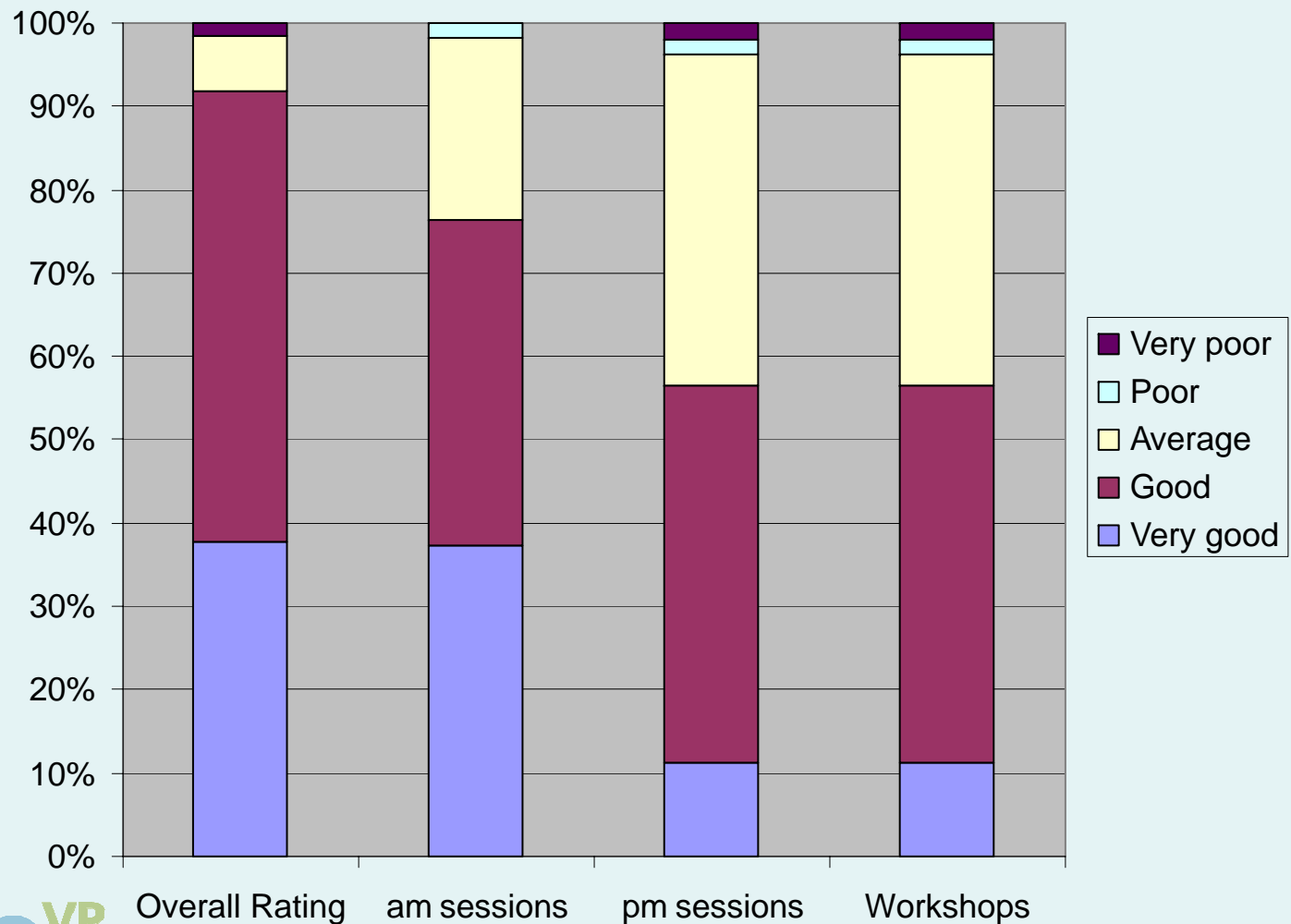
Morning Programme

- ❑ 10.00 **Chairman's Introduction** *Graham Smith, Chair, LowCVP*
- ❑ 10.05 **The low carbon transport imperative** *Dr Peder Jensen, European Environment Agency*
- ❑ 10.25 **The Policy Challenge** *Tony Grayling, ippr*
- ❑ 10.45 *Coffee Break*
- ❑ 11.15 **The Fuels Industry and the Carbon Challenge** *Philip New, BP*
- ❑ 11.35 **The Motor Industry and the Carbon Challenge** *Tod Evans, SMMT*
- ❑ 11.55 **International Perspective** *Bill Ford, Ford Motor Company (Video)*
- ❑ 12.05 *Panel Session - questions and answers including all speakers*
- ❑ 12.30 *Lunch Break (14.00)*

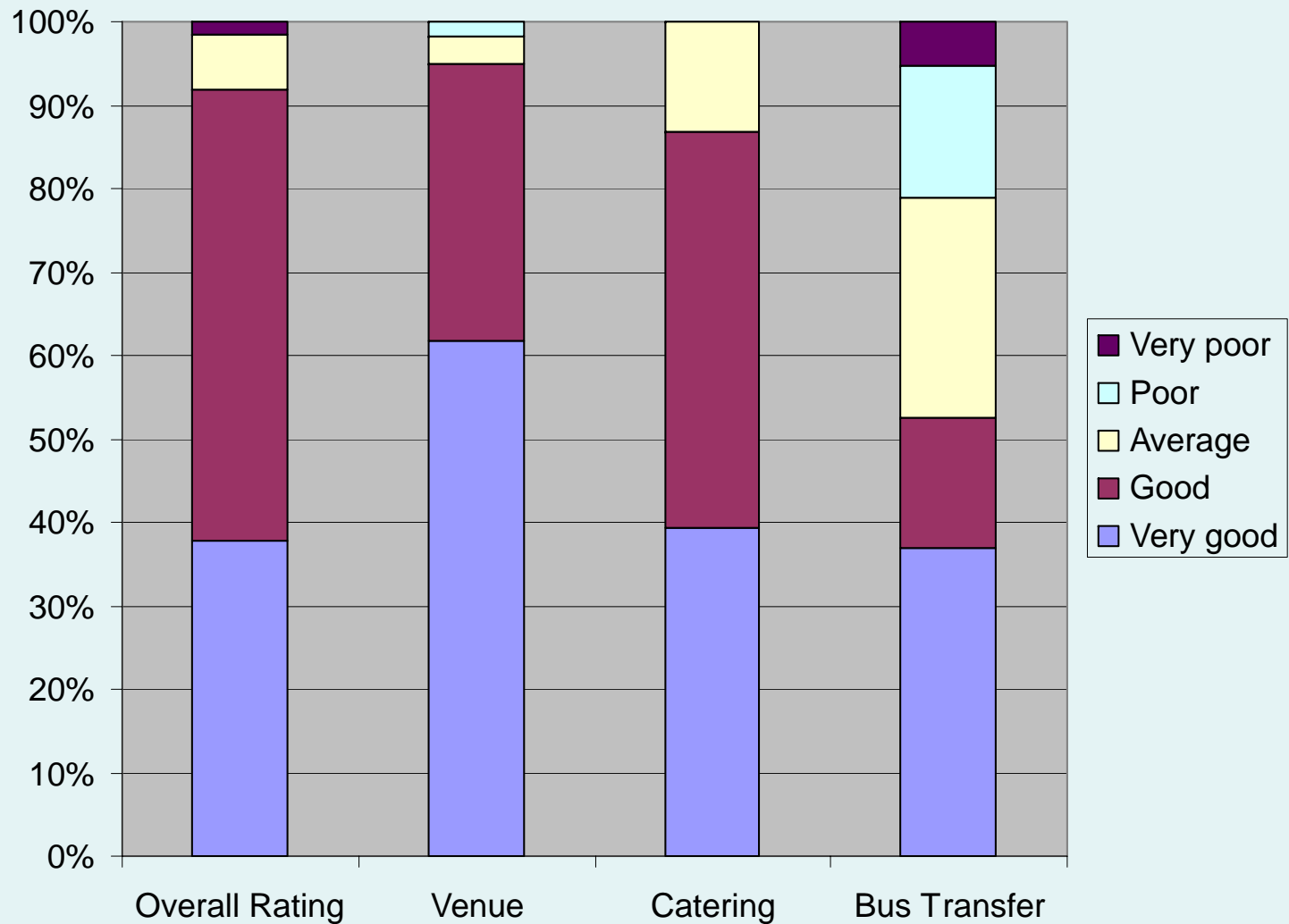
Afternoon programme

- ❑ 14.00 **Chairman's Introduction** *Graham Smith, Chair, LowCVP*
- ❑ 14.05 **The Government Perspective** *Keynote speech by Rt Hon Alistair Darling MP, Secretary of State, DfT*
- ❑ 14.20 **LowCVP Achievements in 2004** *Graham Smith, Chair, LowCVP*
- ❑ 14.35 **LowCVP Strategy and Vision** *Greg Archer, Director, LowCVP*
- ❑ 14.50 Introduction to Workshop Sessions
- ❑ 15.00 Workshop Sessions
- ❑ 16.15 Final Plenary and Feedback
- ❑ 16.40 Chairman's Summing Up
- ❑ 16.45 *Reception (16.45 – 18.00)*

Feedback on conference sessions



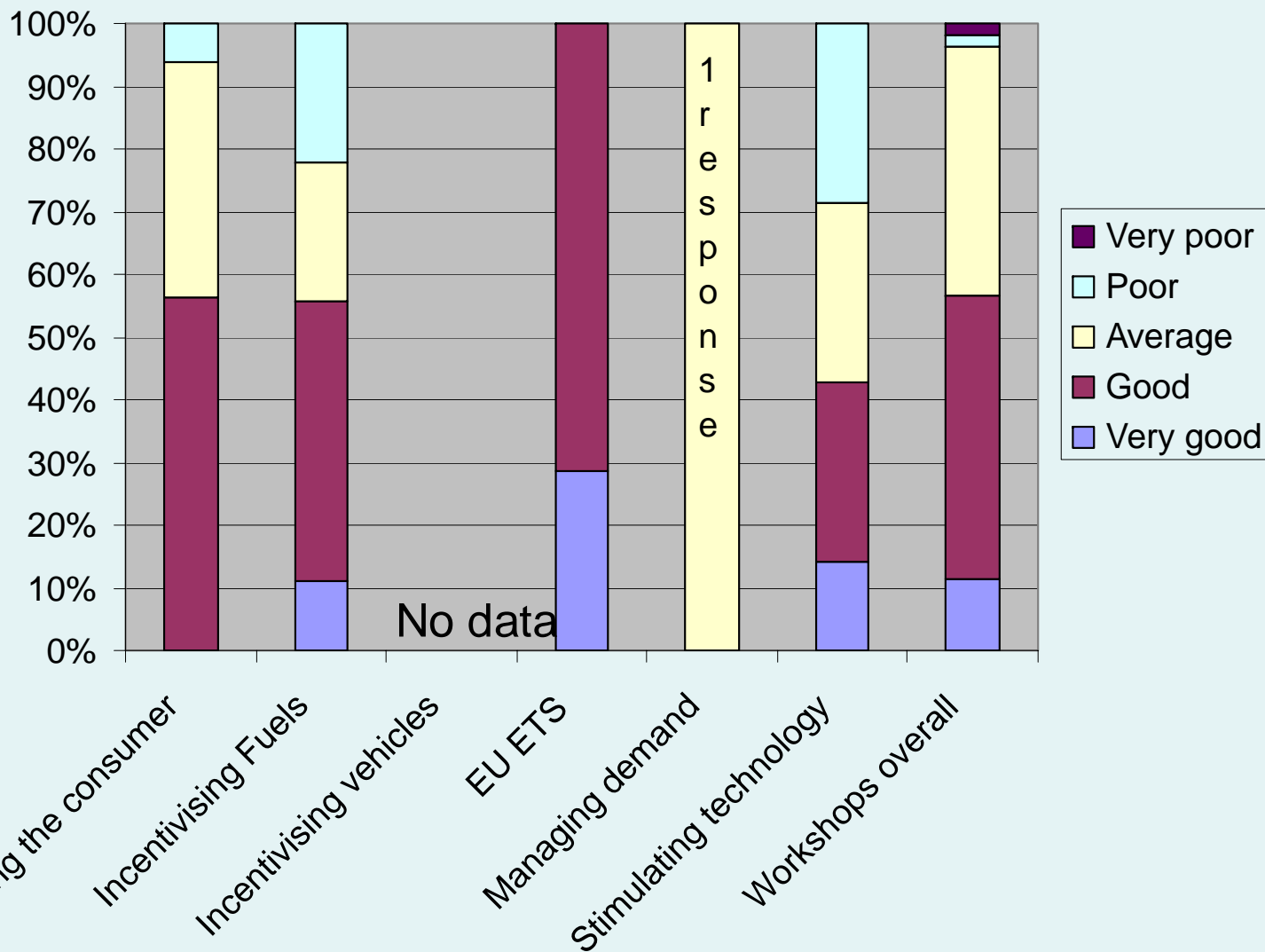
Feedback on venue and logistics



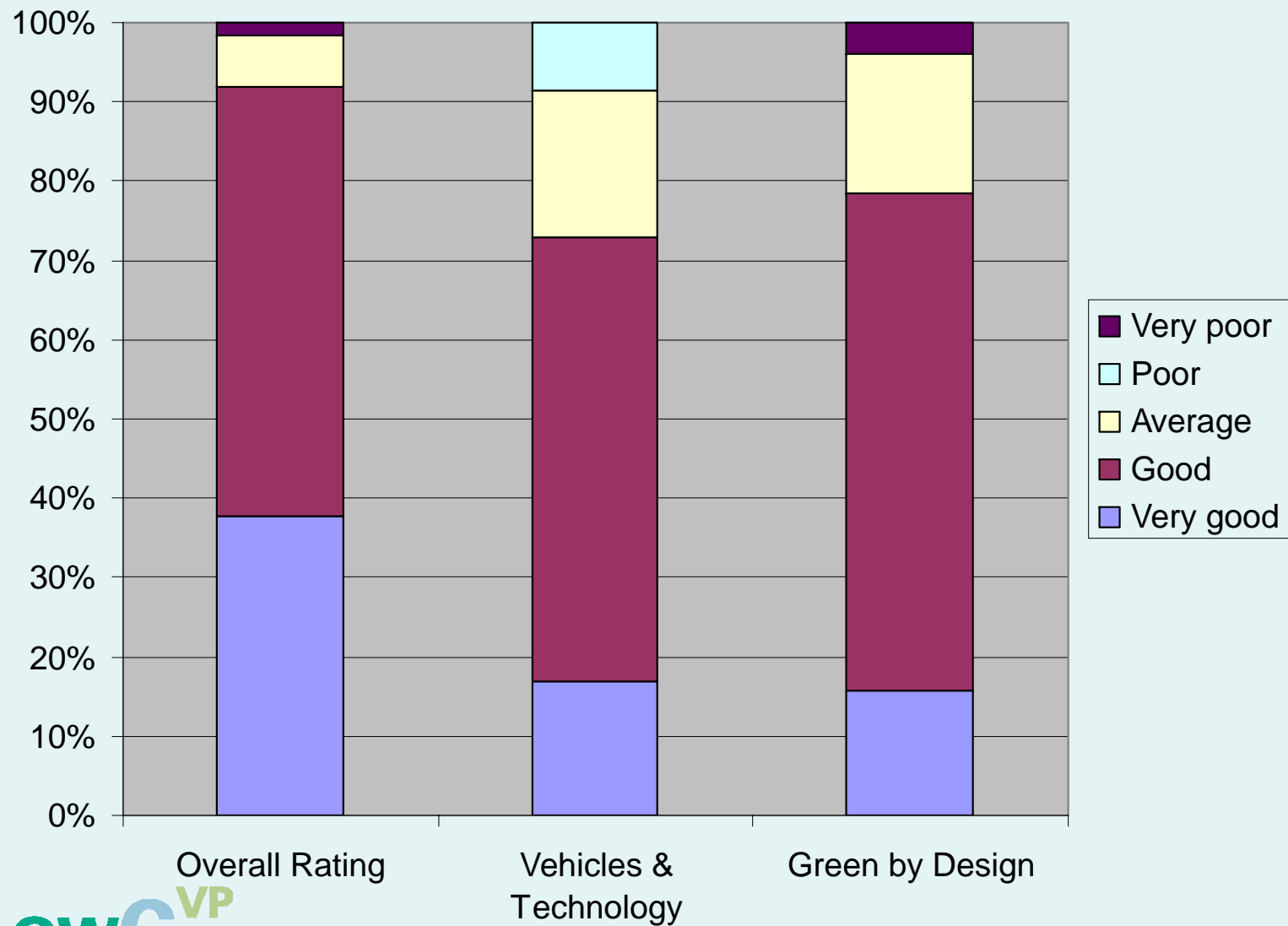
Workshop sessions

- ❑ **WS1** – Should road transport be included within the EU Emissions Trading Scheme?
- ❑ **WS 2** – What are the most effective fiscal and related policies to drive demand for low carbon vehicles?
- ❑ **WS 3** - What are the most effective fiscal and related policies to drive demand for low carbon fuels?
- ❑ **WS 4** – What is the most effective way to market low carbon vehicles and enthuse consumers?
- ❑ **WS 5** – How can we stimulating excellence in supply of low carbon automotive technologies?
- ❑ **WS 6** – What are the solutions for traffic reduction and sustainable demand for road transport

Feedback on workshops



Feedback on exhibitions



Summary

- ❑ >90% assessed conference as Good or Very Good Overall
- ❑ Overall balanced package attractive to delegates
- ❑ am sessions (75% good+) received better feedback than pm and workshops (55% Good+)
- ❑ 95% Good+ for the venue
- ❑ >70% Good+ for the exhibitions
- ❑ 20% dissatisfied with arrangements for the bus
- ❑ <5% dissatisfied with workshops most received c50% Good+
- ❑ EU ETS workshop 100% Good+