



Environment Perspective: The Low Carbon Transport Imperative



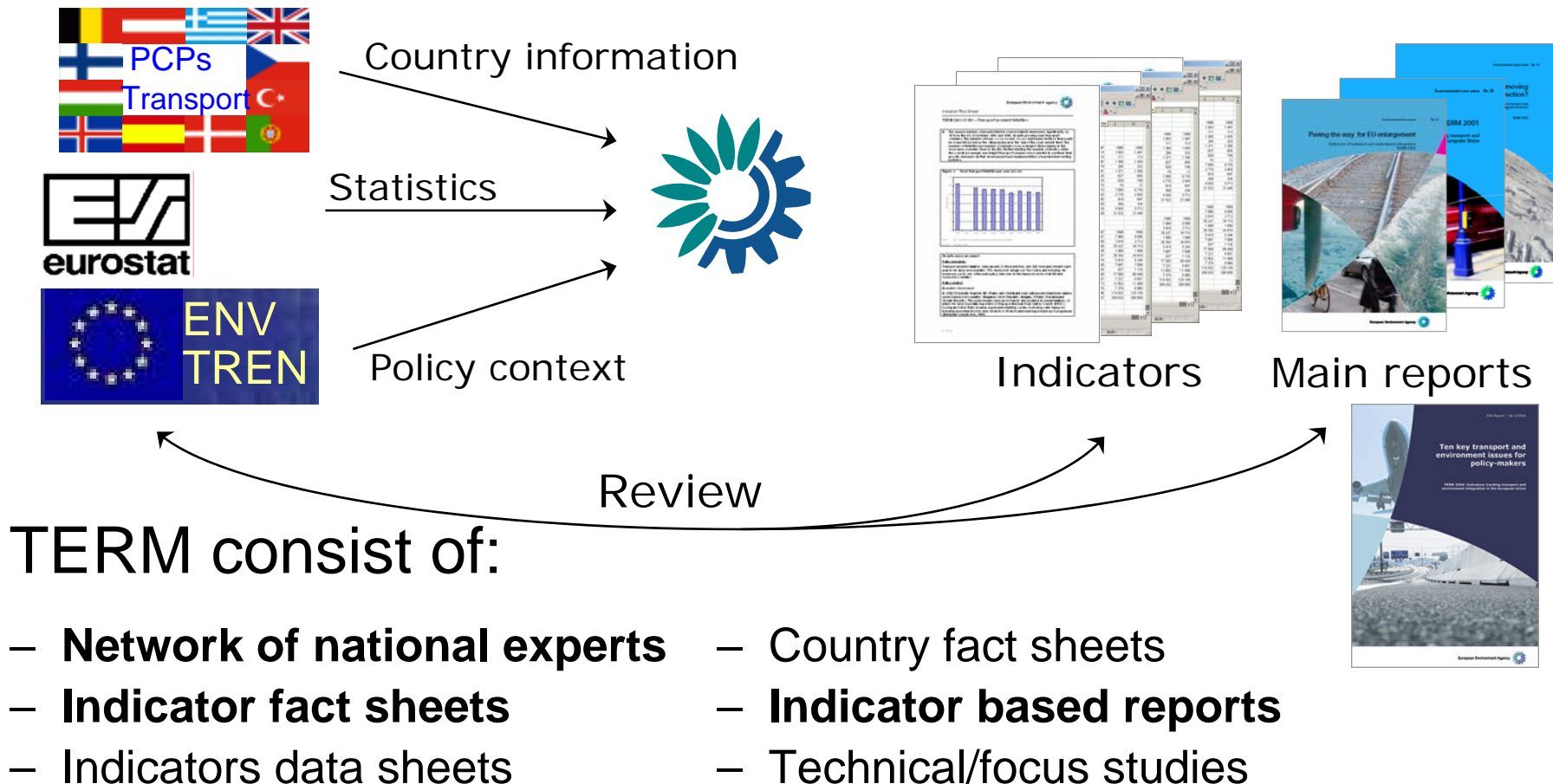
10 February, 2005

Dr. Peder Jensen

Project Manager, Transport and Environment



Transport and Environment Reporting Mechanism



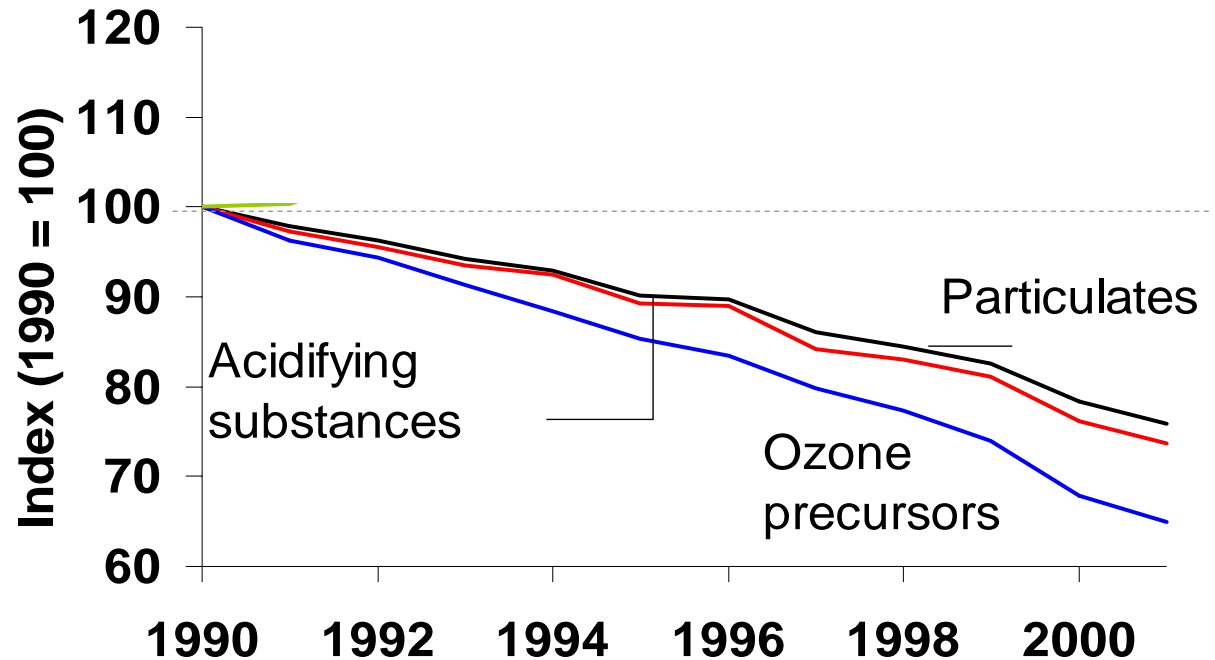
The seven TERM questions:

1. Is the environmental performance of transport improving?
2. Are we getting better at managing transport demand and modal split?
3. Are spatial and transport planning becoming better coordinated so as to match transport demand to the need for access?
4. Are we optimising the use of existing transport infrastructure capacity and moving towards a better-balanced intermodal transport system?
5. Are we moving towards a fairer and more efficient pricing system, which ensures that external costs are internalised?
6. How rapidly are cleaner technologies being implemented and how efficiently are vehicles being used?
7. How effectively are environmental management and monitoring tools being used to support policy- and decision-making?



Environmental performance of transport

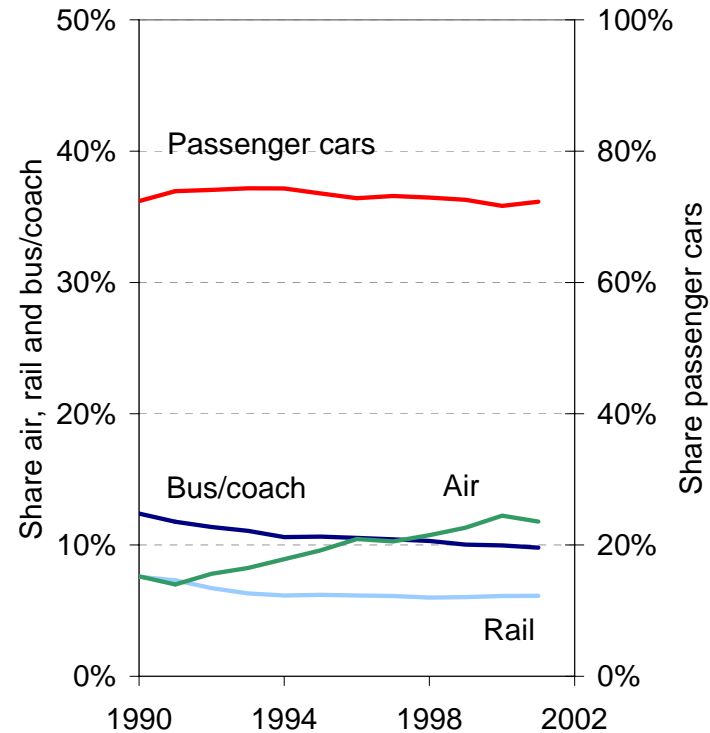
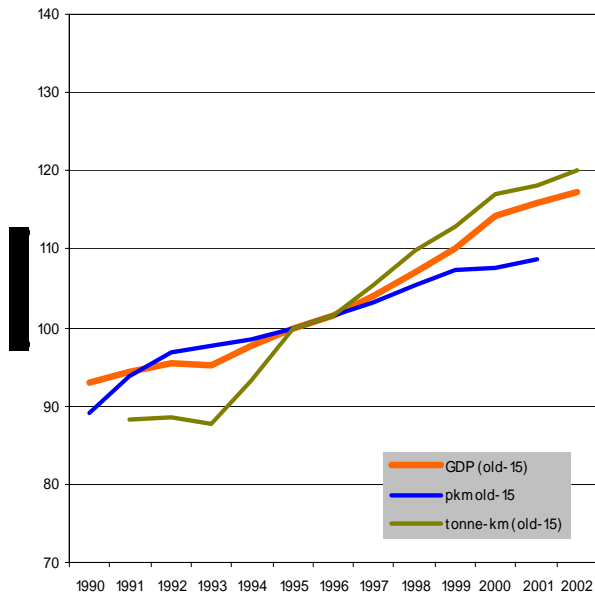
Trends in environmental pressures



Pollutant emissions decline, despite traffic growth

Managing transport demand

Transport growth in 15 old member states



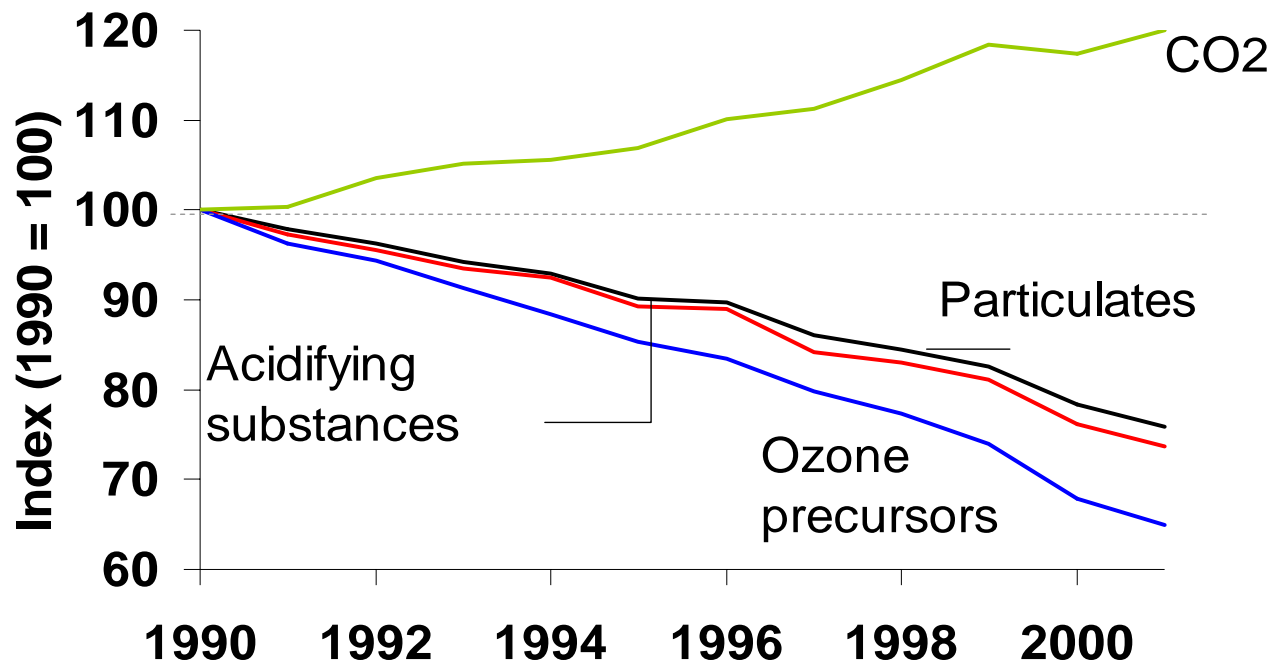
Source: EEA, 2004

**Volumes grow, but some signs of decoupling
Passenger transport shifts to aviation**



Environmental performance of transport

Trends in environmental pressures

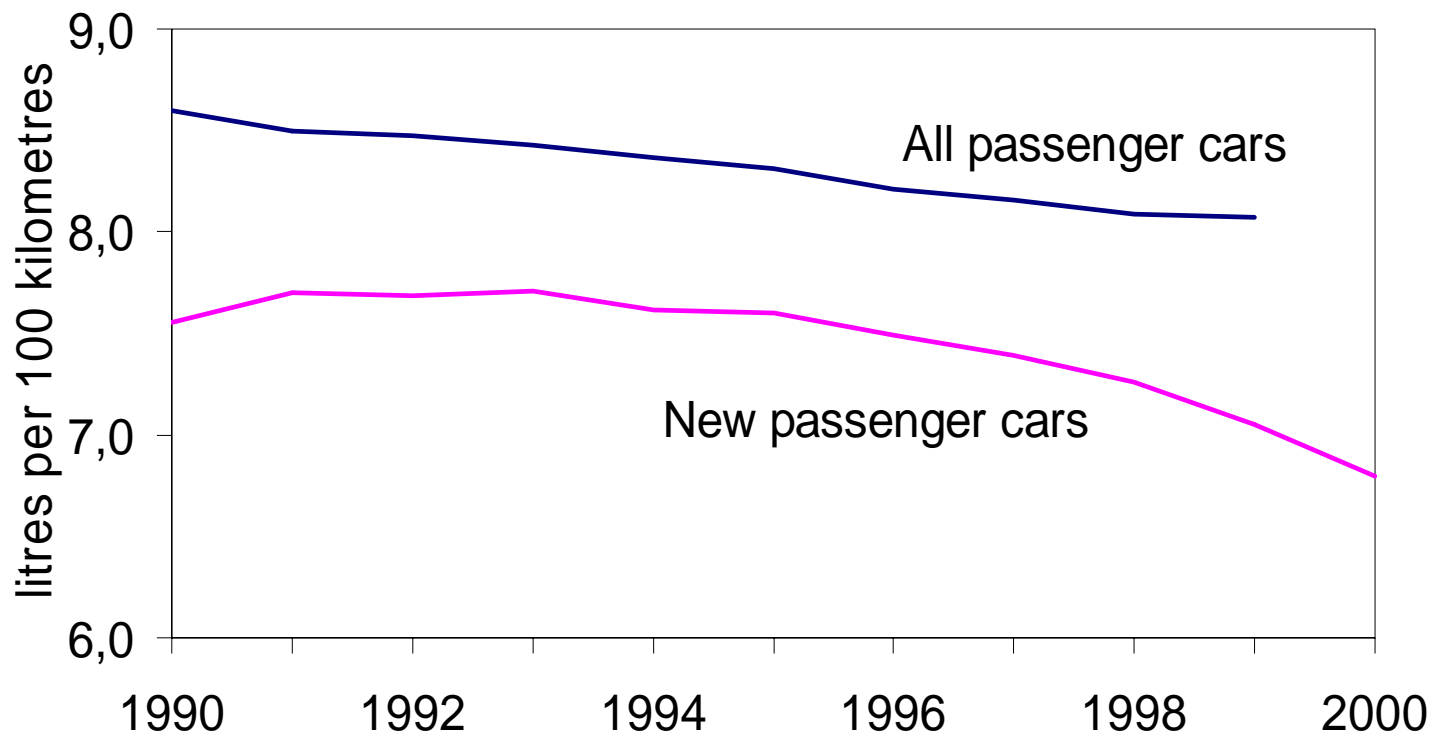


Greenhouse gas emissions increase



Voluntary agreement on vehicle efficiency

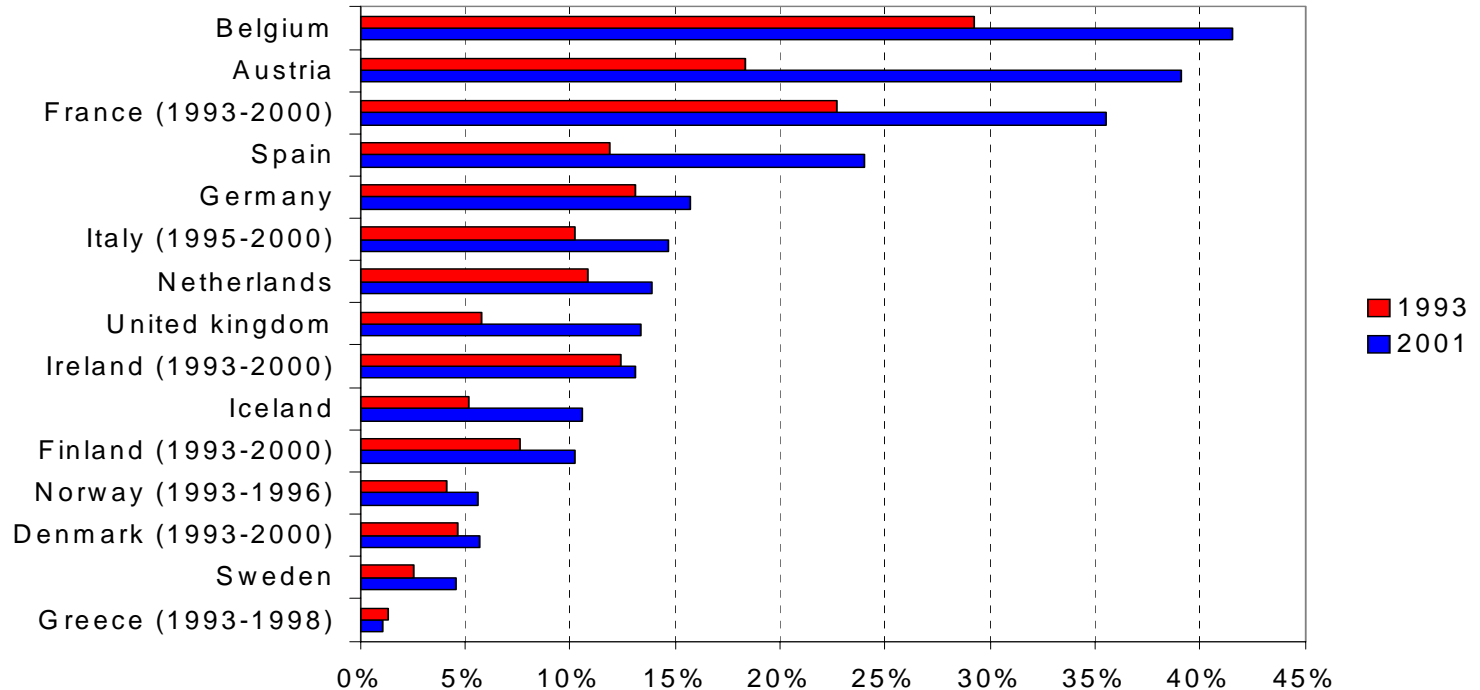
Progress in fuel efficiency of passenger cars in the EU-15



Source: EEA, 2004

Voluntary agreements with car industry delivers progress in fuel efficiency, but total emissions still increases.

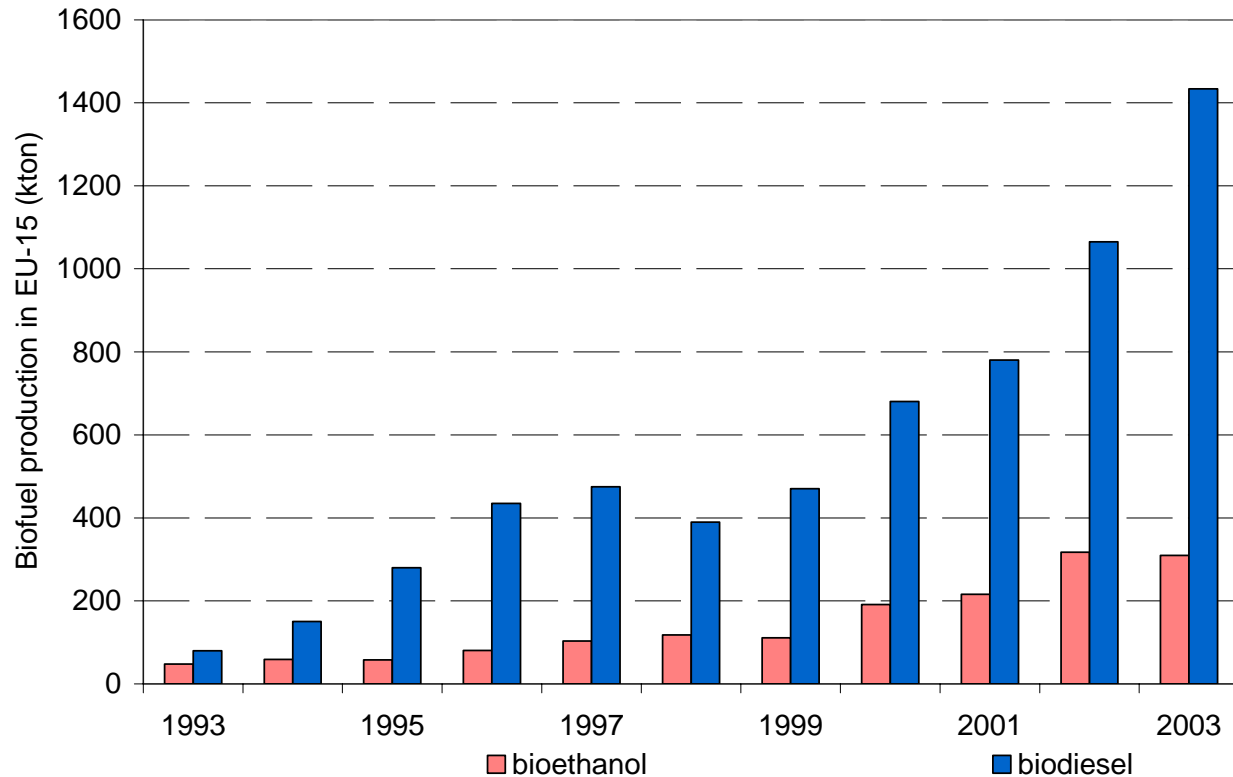
Diesel share



Share of diesel in fleet is growing rapidly and accounting for 15% of increase in efficiency.

Implementation speed of new technologies

Bio-fuel production in EU-15



Alternative fuels policy is starting to take effect with bio-fuels



Conclusion

- **There is a risk that the positive developments we are seeing for regulates pollutants will make the greenhouse gas problem worse.**
- **We must therefore reduce emissions of all pollutants in parallel.**
- **Clean air at the expense of energy consumption should be seen as a no-go**

TERM on the web

Thank you for your attention

**TERM reports and detailed indicator fact sheets
can be found on:**

http://themes.eea.eu.int/Sectors_and_activities/transport