

Responsible Performance

Adrian Tucker-Peake

Innovations Manager
MG Rover Group Ltd



MG TF 200 HPD



Pressures and Innovation

- Government targets for 2012
 - Demanding criteria
 - 10% of new registrations to achieve less than 100g/km CO₂ emissions
- MG Rover Group / Powertrain Ltd / MIRA win a Government sponsored initiative for the “Ultra Low Carbon Car Challenge”



Exciting, and Green “Electric Hybrid” Technology



MG / MIRA Vision... “Exciting, responsible and multifunctional”



Customer Delight Opportunities

Exploit the capabilities of different characteristic independent, powertrains...

All wheel drive

Active torque split

High torque launch

Hotshift acceleration

Energy regeneration

City driving



Partnership Roles in Developing New Product Technology

MG ROVER

STYLE

PERFORMANCE

HANDLING

EASY DRIVING

AFFORDABLE

MIRA

AERODYNAMICS

200 HP HYBRID

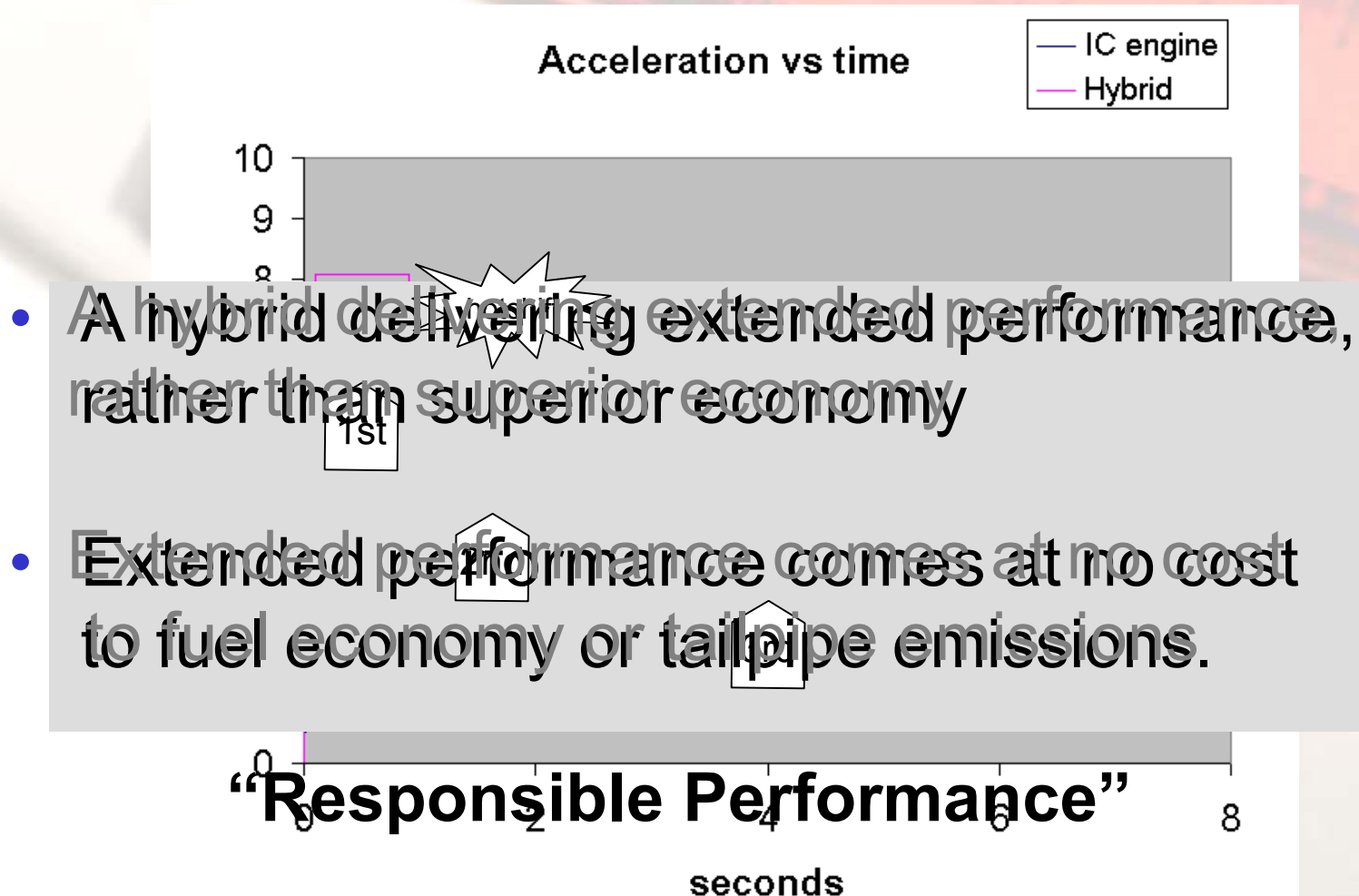
4WD ENG'G.

ALGORITHMS

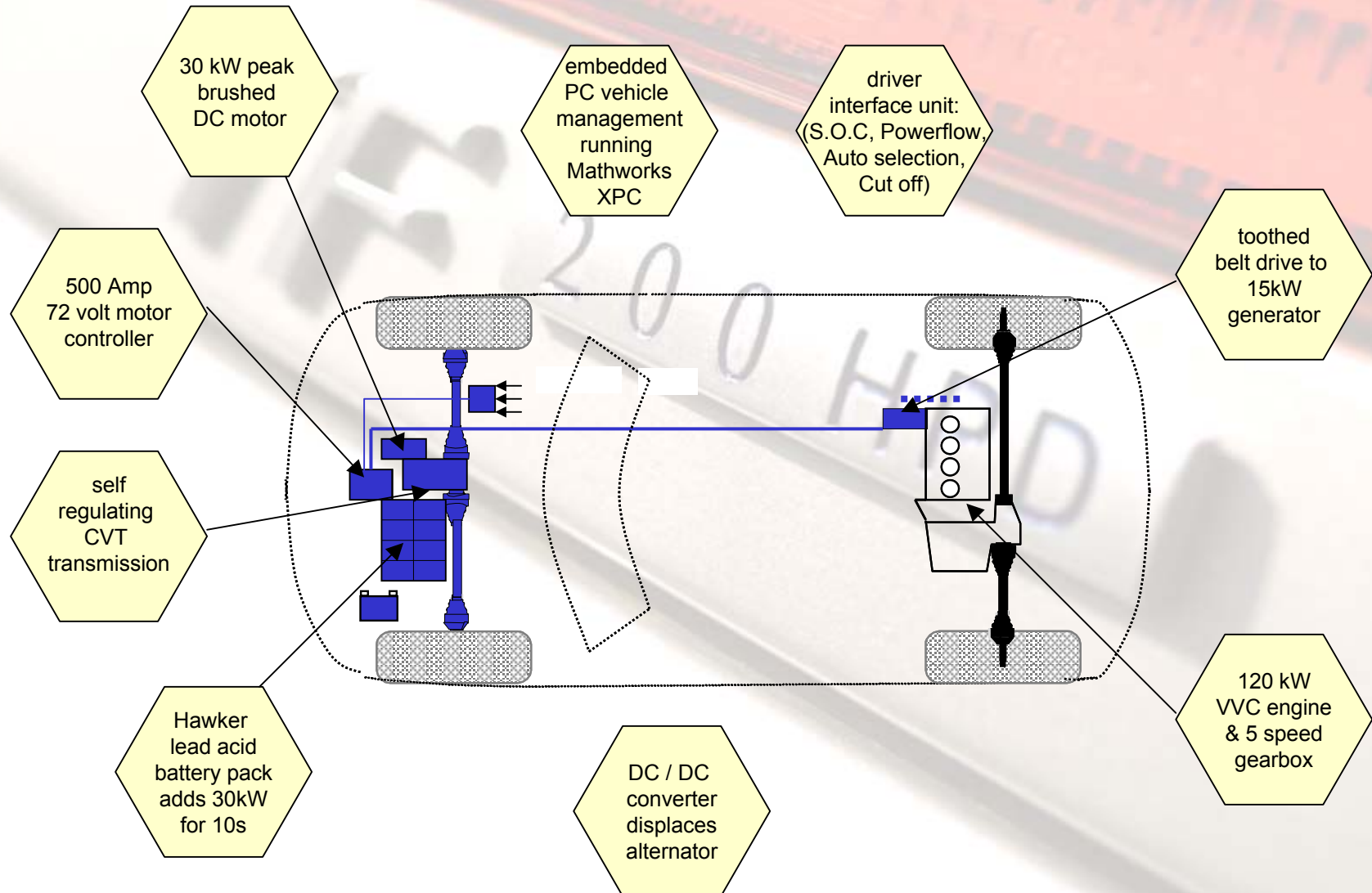
PROVEN
COMPONENTS



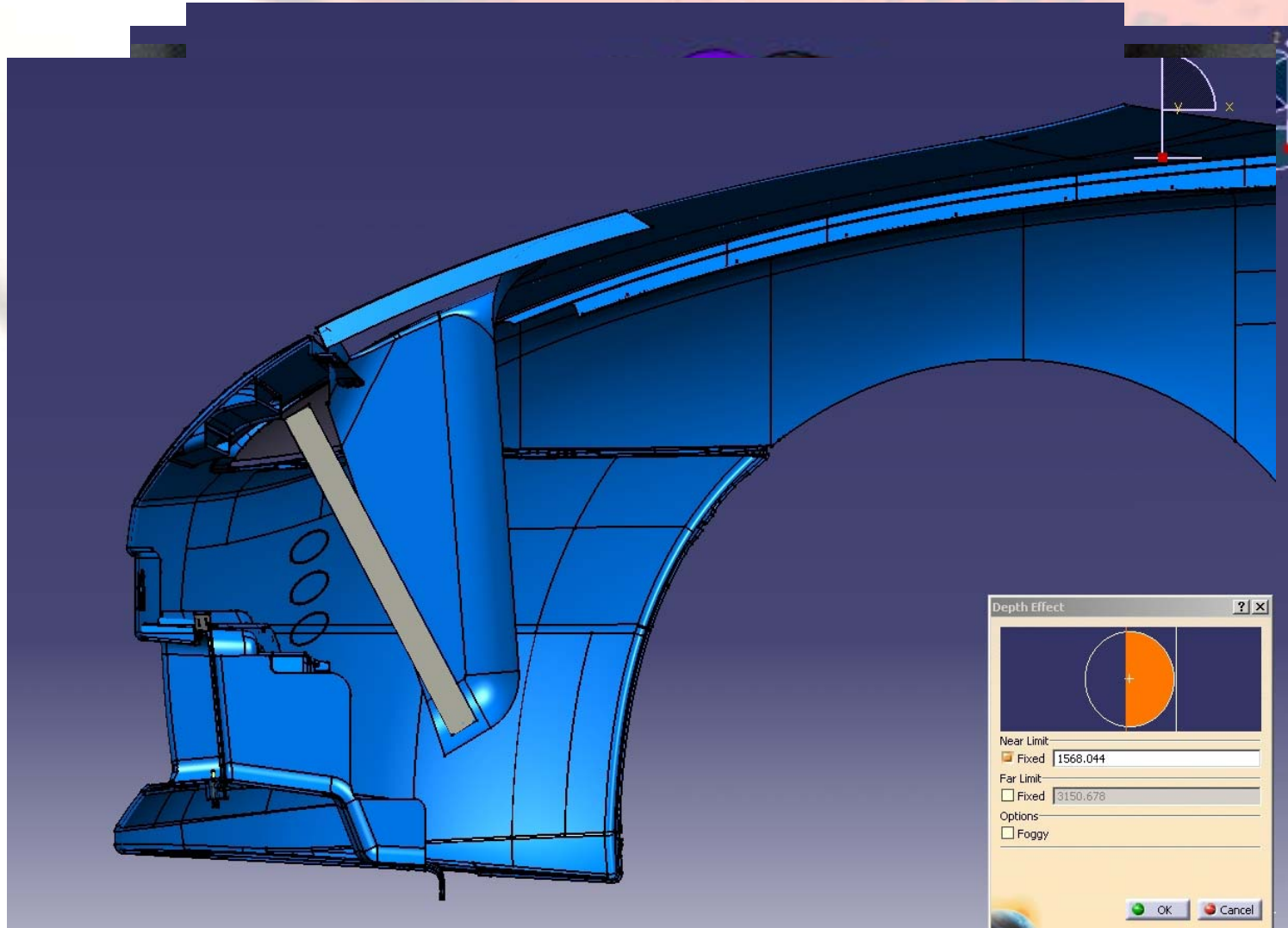
The Vehicle Concept



The Vehicle Architecture

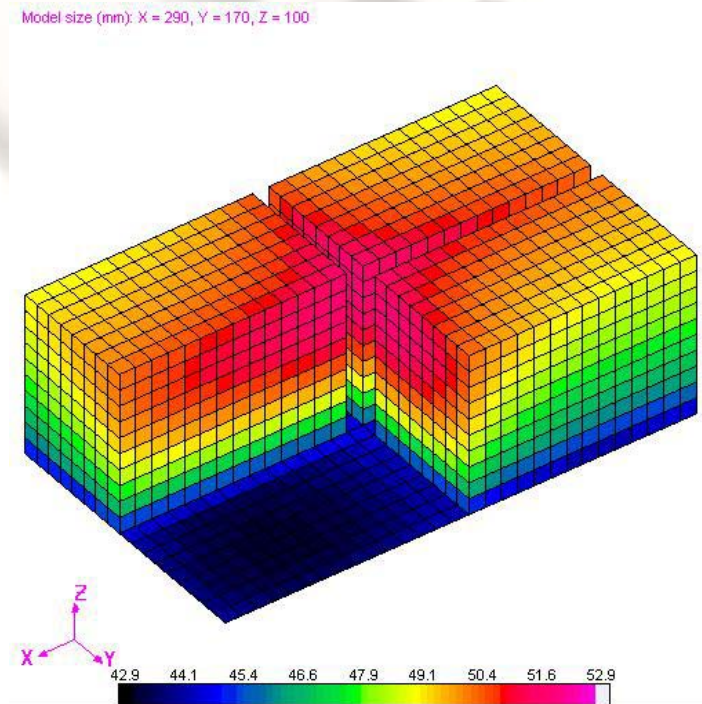


The Design Process

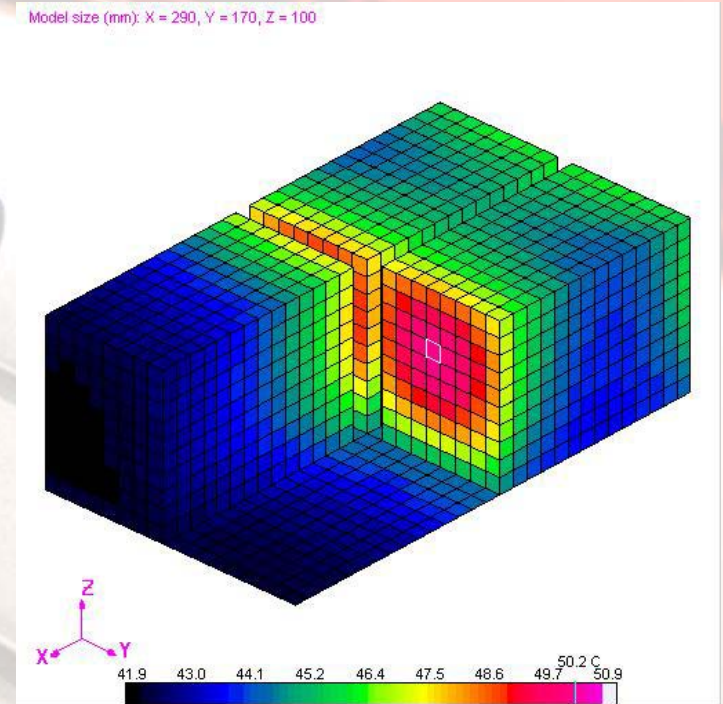


Validated Modelling Solutions

Example: Battery temperatures



Free Convection



Forced Convection – 5m/s

The MG *TF* 200 HPD

“Hybrid Performance Development”

- ✓ 0 – 60 mph in less than 6 seconds with excellent start line acceleration
- ✓ Total peak powertrain output 200 bhp
- ✓ 4WD traction
- ✓ “Hotshift” gear changes further assist acceleration
- ✓ Programmable Under Steer / Over Steer
- ✓ Electric driving mode – clutchless operation.





Responsible Performance

